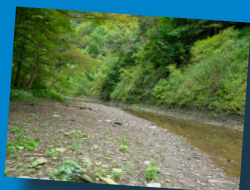


Welcome to Greater Erie Regional Trails

Explore the great outdoors!

The Greater Erie Regional Trail Network showcases more than 16 trail venues throughout Erie County.



Cross the creek at Six Mile Creek Park.

Enjoy the great views of Lake Erie at Lake Erie Community Park.



Experience an ice age gorge formation at Wintergreen Gorge.

Explore the Lake Erie Arboretum at Frontier Park.



Enjoy a dedicated dog park area for both large and small breed dogs at McClelland Park.

There is so much you can do on ErieTrails.org

- Find a trail location near you
- See maps of trail routes
- View photos of the terrain
- Learn about upcoming activities and events
- Discover things to do at each trail

The Greater Erie Regional Trail Network is a project of the members of the Erie Area Council of Governments.

This project is funded in part by a Multi-Municipal grant from Erie County Gaming Revenue Authority.



ERIE AREA COUNCIL
OF GOVERNMENTS



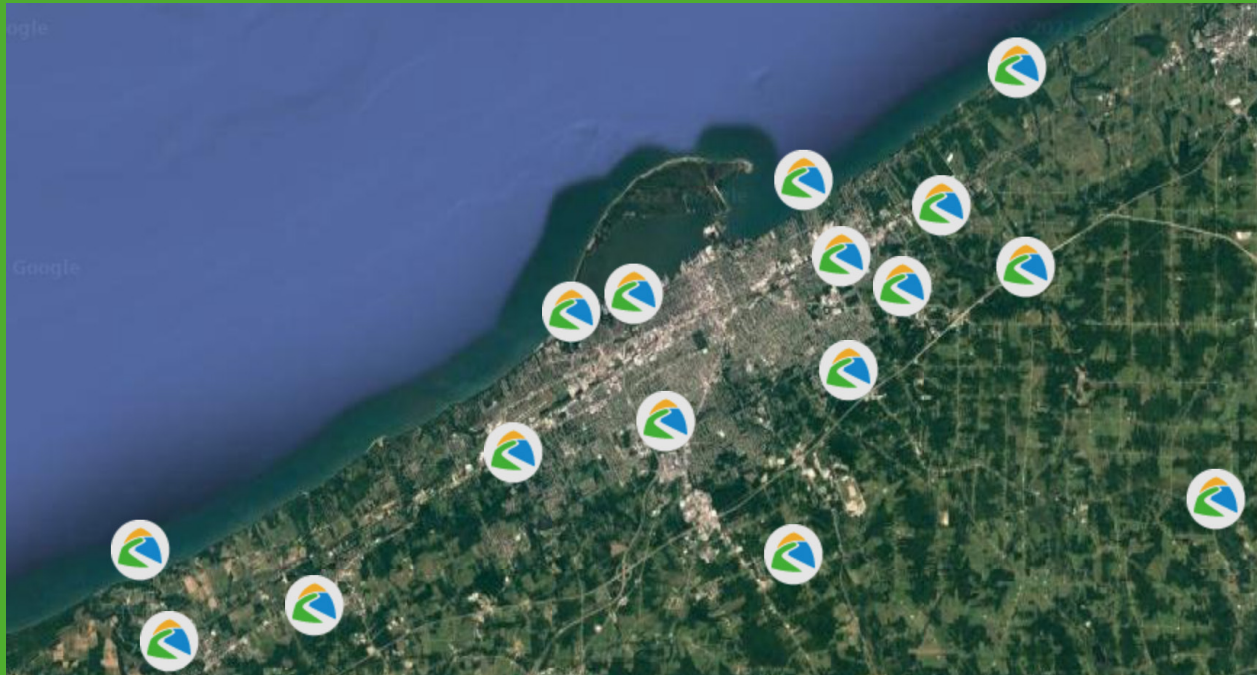
ECGRA
ERIE COUNTY GAMING REVENUE AUTHORITY



Download our free "Hello Erie" trip planner app! Create an itinerary, map out your visit, view upcoming events, and more



ErieTrails.org



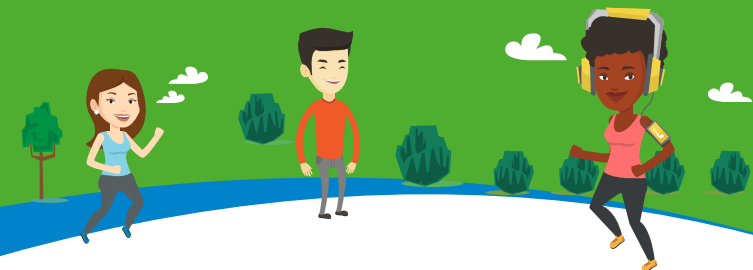
Visit these great trail sites:

- Asbury Woods
- Bridger Park
- Elk Creek Trail
- Frontier Park
- Harborcreek Community Park
- Headwaters Park
- Highmeyer Park
- Lake Erie Community Park
- Lakeside Trail
- McClelland Park
- Picnicana Park
- Pleasant Ridge Park
- Scott Park
- Six Mile Creek Park
- West Branch French Creek
- Wintergreen Gorge

- Get the most out of your leisure time by filtering trails by activity on ErieTrails.org.
- Use Google Maps to easily find and navigate to all of the trails in the trail network.
- Visit each trail site to experience the unique park and recreational treasures throughout Erie County.

Look for these Greater Erie Regional Trail signs to guide you.

- Color coded trails match the ErieTrails.org website with the length of each trail included on the sign and the trail web page.



ErieTrails.org